



**NOW LEASING | JOIN THESE FINE TENANTS!**



# ILLIANO MAIN STREET PLAZA

## Prime Retail & Office Space

Mount Airy, MD 21771

Call Now to Lease space in this Stunning New **44,800 Sq. Ft.** Prime Office/Retail building (*Limited availability*). Full-service Executive Offices include High Speed Internet, Gas, Electric and Water. Ample Parking! Call for More Information.

Additional Office Spaces are Now Available through Illiano Properties. See Reverse Side for our Featured Listings.



*A three-story plus lower level retail and office building located on South Main Street in the heart of Mount Airy's central business area. Close to I-70, adjacent to the Walmart/Safeway Shopping Center.*

**For More Information Please Contact:**  
**Jessica Windsor or Tammy Ference**  
**301.829.5200**



(All information deemed reliable but not guaranteed)

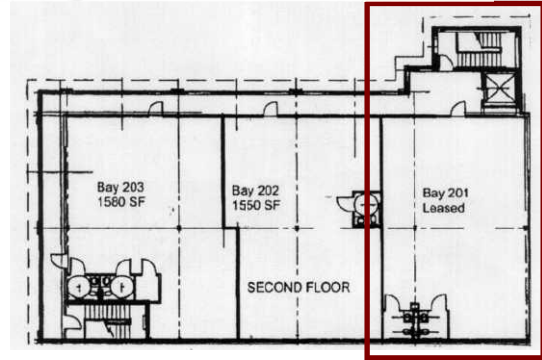
# Office Space Now Available!

Visit us online at [www.IllianoProperty.com](http://www.IllianoProperty.com)

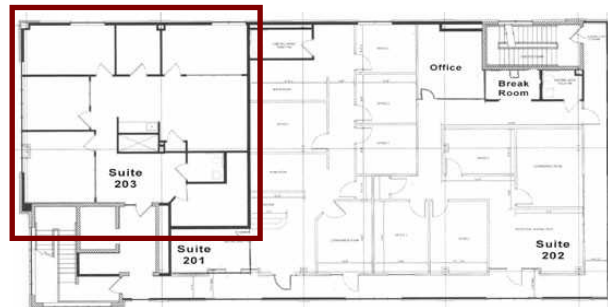
## “Featured Listings”



**Gennaro Illiano Plaza I**  
 1604 Ridgeside Drive Suite 201  
 1,988 Square Feet - Second Floor



**Gennaro Illiano Plaza II**  
 1604 Ridgeside Drive Suite 203  
 1,999 Square Feet - Second Floor



Upscale finishes throughout, Sidelights, Break Room & Private Bathroom

**6 East Ridgeville Boulevard - 1,020 Square Feet - Second Floor**

